


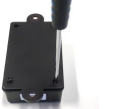


The GB 3000 is a Geobeacon that enables indoor geolocation for your tracked assets. This manual covers the physical installation and platform activation process.

Once you have activated a Geobeacon, it **MUST** be associated with a correct location in the Sensolus platform. Failing to do so may result in trackers not being able to determine their location anymore.

Step 1: Place the batteries

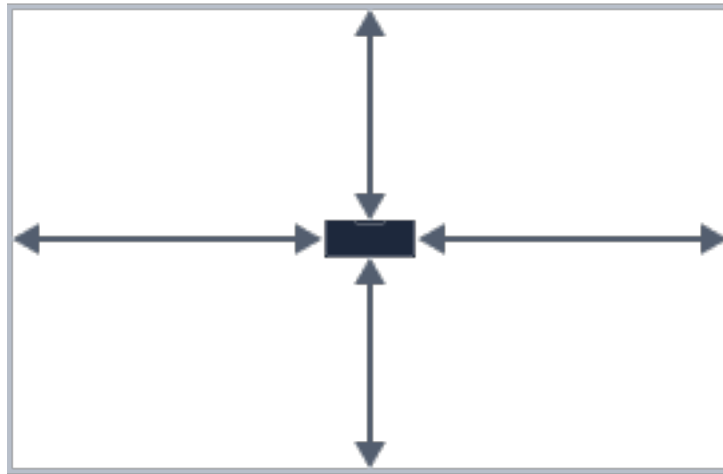
 <p>Take all parts out of the plastic bag.</p>	 <p>Open the geobeacon.</p>	 <p>Add the extra battery to the geobeacon.</p>	 <p>Close the geobeacon with the small black screws.</p>
---	--	---	---

Step 2: Get the serial number



Make sure to write down the serial number of the Geobeacon as you will need it later for platform registration.

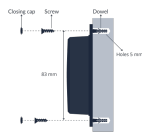
Step 3: Choose a location



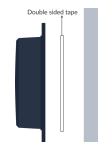
Identify the area in which your assets need to be geolocated using this Geobeacon and place the Geobeacon in the middle of that area.

Step 4: Install the geobeacon

The GB 3000 can be mounted using screws or double-sided tape.



Install with screws: Use the closing cap, screw, and dowel. The holes are 5 mm and spaced 83 mm apart.



Install with double-sided tape: Apply tape to the back of the geobeacon and press firmly against the mounting surface.

Step 5: Verify if the geobeacon works



Use the Beaconset+ app to verify that the BLE advertisements are discoverable. You will see the Geobeacon serial number in the list. Move around to verify the covered area.

BLE signals and range

Sensolus Geobeacons use BLE signals. Water and metal surfaces reflect the Bluetooth signals. Always test the devices in real life circumstances for optimal installation.

Range: Depending on the configured signal strength, the Geobeacon will cover an area between 2 meter and 100 meter radius. For indoor geolocation, the standard range is around 30 meters.

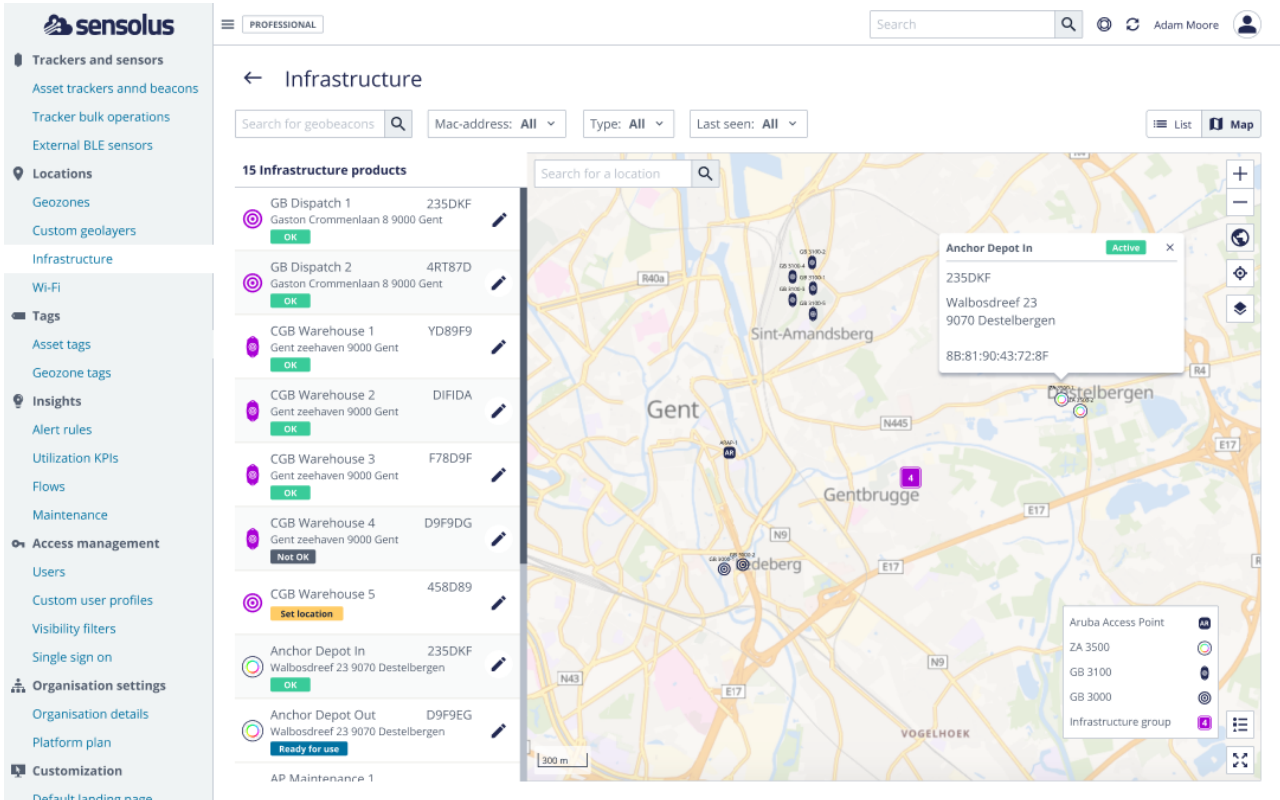
Installation advice

 <p>Height: Install the geobeacon as high as possible, minimum 1.8 meter above the ground.</p>	 <p>Position: A Geobeacon is a fixed device that should always remain at the same location.</p>	 <p>Orientation: Geobeacons are mounted vertically or horizontally with the back facing the mounting surface. All other installations are not recommended.</p>
---	--	---

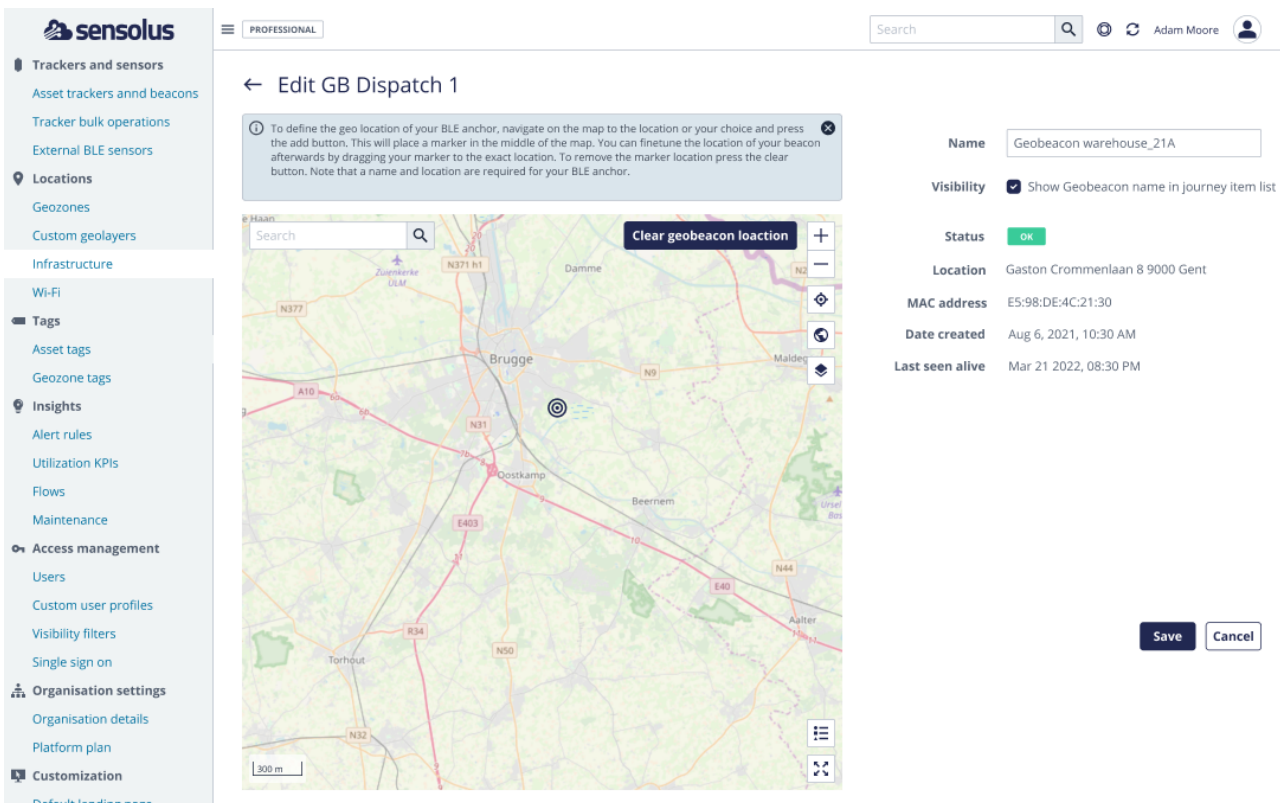
Activation in the platform

Once your Geobeacons are properly installed, you need to register and configure them in the Sensolus platform.

Sign in to the Sensolus platform and go to Admin → Infrastructure. If your Geobeacons have been pre-assigned to your account, you will see their serial number in the list.

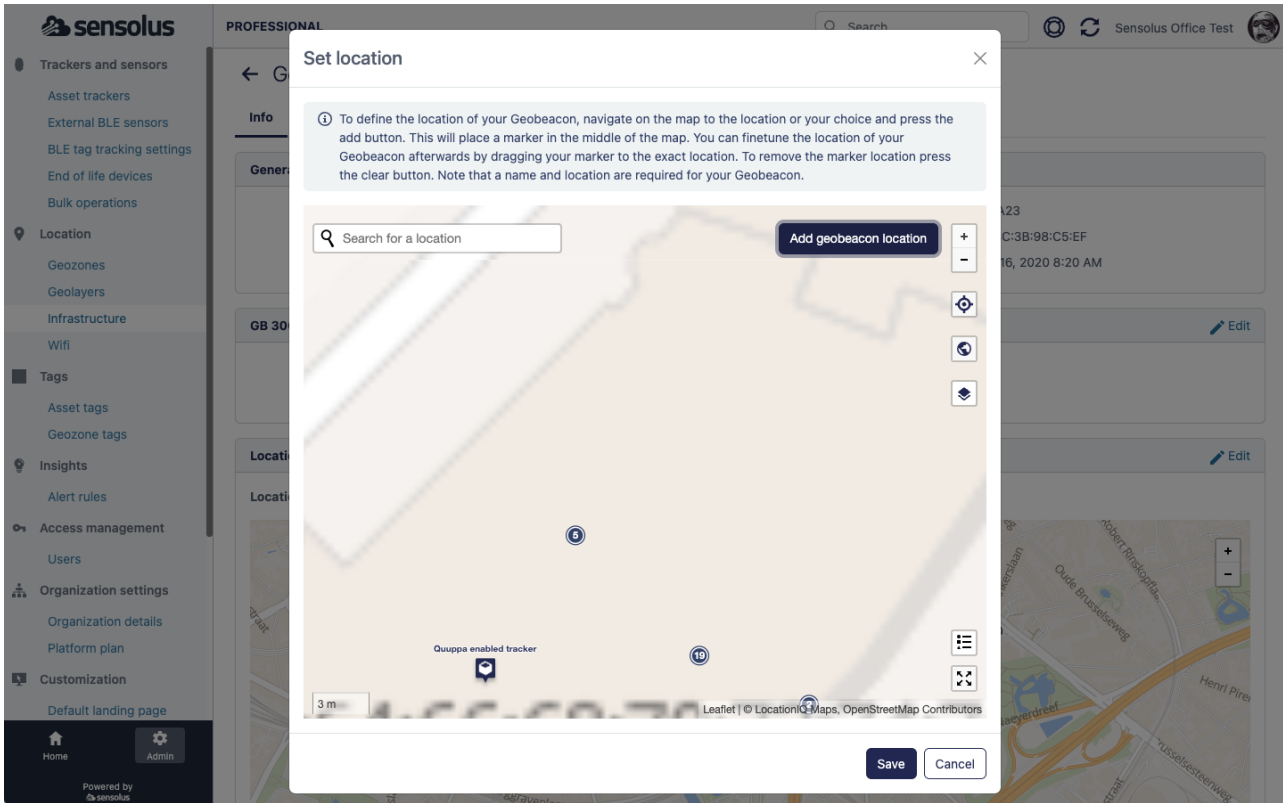


Go to the geobeacon you want to configure and edit the settings to give it a useful name.



Edit the location:

- Type in the approximate address in the search bar and zoom in until you can recognize the place where you physically mounted the Geobeacon.
- Click Add geobeacon location and a marker will appear.
- Move the marker until it shows the exact place where you installed the Geobeacon.
- Click Save to finish.



Make sure that your trackers are configured to scan for Geobeacons. This can be done in the tracker configuration page, or Sensolus support can assist with this.