

Activation

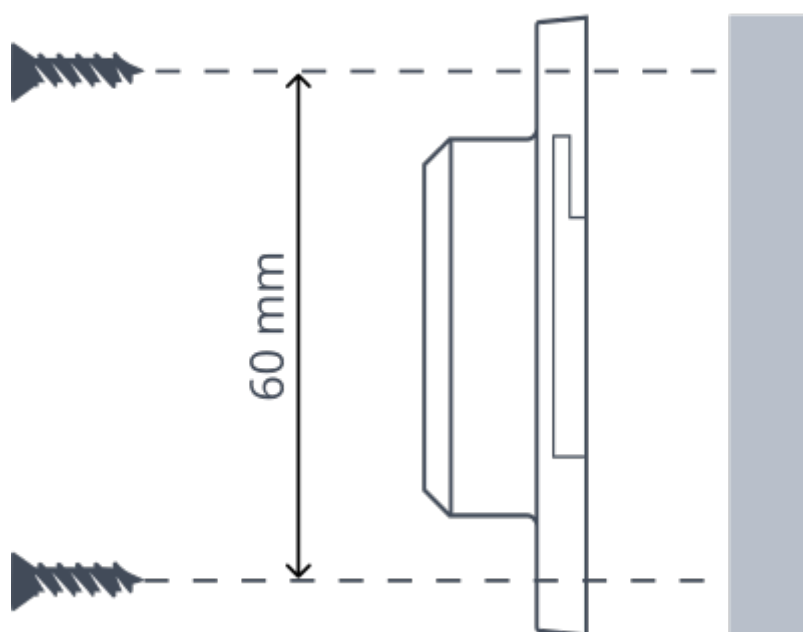
The TAG 2006 is already activated when you receive it. No activation steps are required.

Mounting the TAG 2006

Guidelines for mounting the tracker can be found in the [Sensolus Documentation center](#).

Mounting with screws, rivets, or bolts

The TAG 2006 has mounting holes for affixing with rivets, screws, or bolts. The spacing between the mounting holes is 60mm.

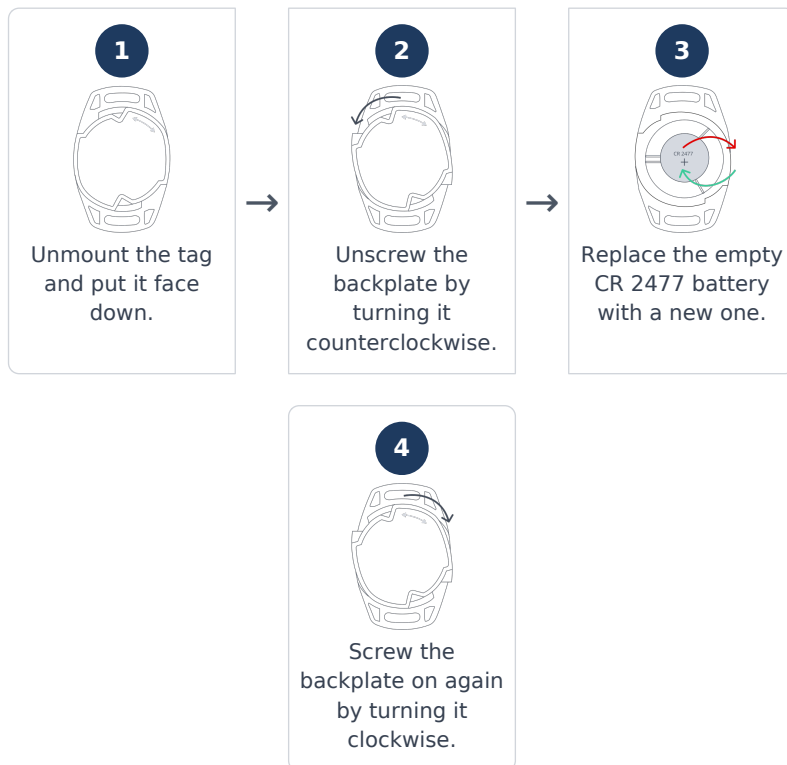


Important mounting warning

Do not install the TAG 2006 close to magnets. Magnets can interfere with the tag's operation.

Battery replacement

The battery is replaceable in case of defect. The TAG 2006 uses a CR 2477 battery.



Edit tag information with the mobile app

The Sensolus mobile app allows you to edit the name, tags, and picture of a TAG 2006.

Download the Sensolus mobile app from the [App Store](#) or [Google Play](#).

Open the Sensolus smartphone app and login with your credentials. Go to the tag you want to edit via the asset list, map, or search function. In the search function, use the QR code scanner to open the tag details page. Tap on the edit button. You can now edit the name, tags, and picture of the tag. Save the settings by tapping the save icon.