

# Installing the zone anchor

## Attach the zone anchor on the wall

Guidelines how to mount the tracker can be found [here](#).

## Power the zone anchor

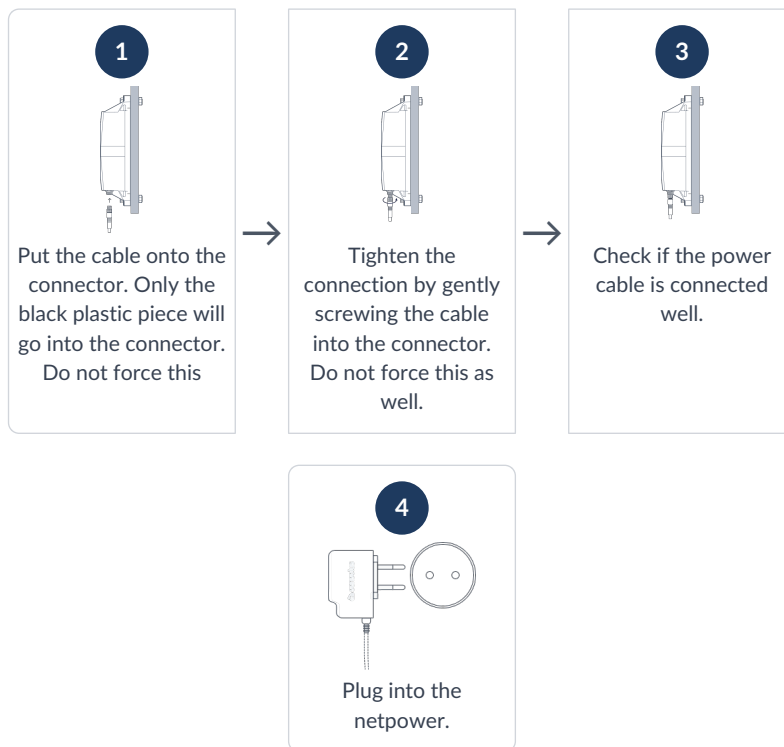
The zone anchor can operate independently on its internal battery or you can connect the zone anchor to the standard electrical network using a power cable and adapter.

If you use the internal battery you can skip this.

Activation of the trackers is preferably done with clear skies, and not inside (e.g. factory or warehouse).

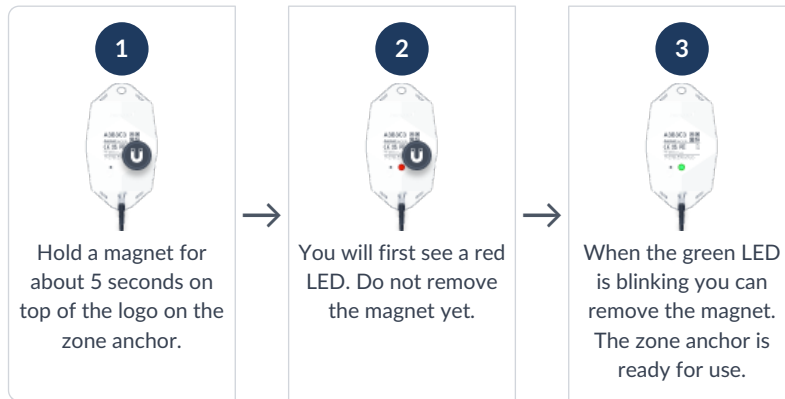
Trackers are not activated when delivered to your premises.

Their subscription in the platform will start within six months of purchase.






## Activation of the zone anchor

Activation of the zone anchors is preferably done with clear skies, and not inside (e.g. factory or warehouse). Zone anchors are not activated when delivered to your premises. Their subscription in the platform will start within six month of purchase.






## General installation advice

Activation of the zone anchors is preferably done with clear skies, and not inside (e.g. factory or warehouse). Zone anchors are not activated when delivered to your premises. Their subscription in the platform will start within six month of purchase.

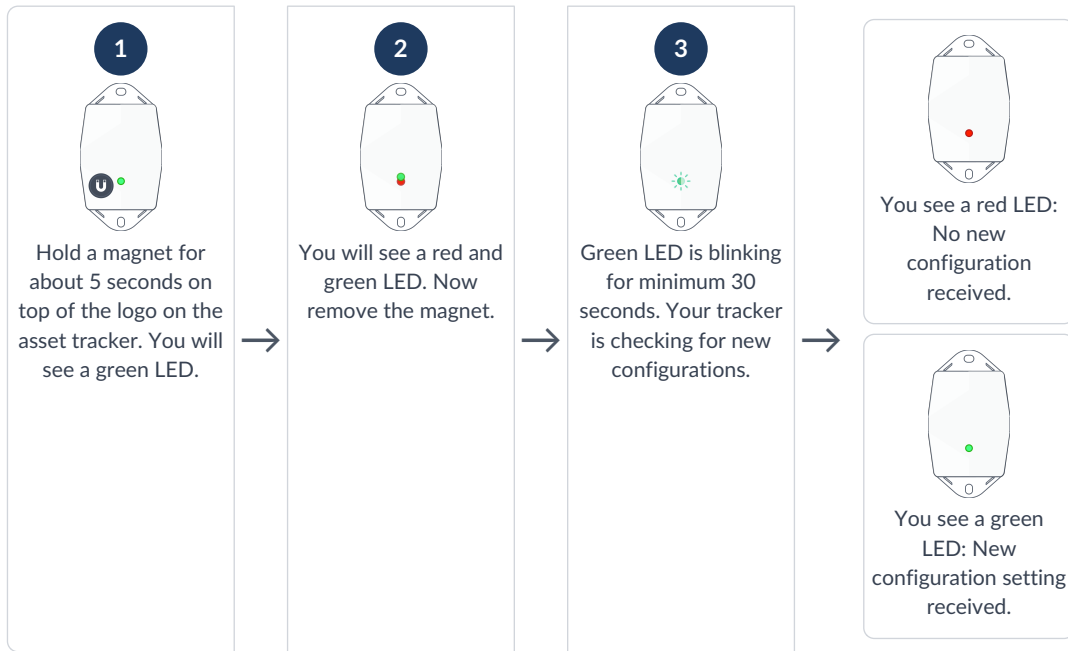
 <p>Avoid blocking the tracker's view with metal or carbonfibre walls. They weaken or block the radiofrequency signals.</p>	 <p>Install the tracker vertically, with the logo facing up.</p>	 <p>Place the tracker around 3 meter high on a wall to ensure scanning coverage.</p>
--	---	---

## Conditions and surrounding materials

 <p>Concrete has an impact on the range of Bluetooth signals.</p>	 <p>Water absorbs the Bluetooth signals, Large amounts of water will impact the range and detectability of the zone anchor.</p>	 <p>Metal reflects the Bluetooth signals, Large amounts of metal will impact the range and detectability of the zone anchor.</p>
--	--	---





## Anchor placement for zone detection

### Force new configuration download on the tracker



## Troubleshooting

1. Put the magnet on the tracker for less than 5 seconds
2. The possible LED feedback options are:

 <p>Red LED: Tracker is not activated</p>	 <p>Green LED: Tracker is activated and working properly</p>	 <p>No LED: tracker is not functioning (probably dead battery -&gt; contact support)</p>	 <p>Red LED is blinking: Tracker is busy</p>
--	---	--	---

## Regulatory Information

### Federal Communication Commission Interference Statement

This device complies with Part 15 of the FCC Rules. Operation is subject to the following two conditions:

1. This device may not cause harmful interference, and
2. This device must accept any interference received, including interference that may cause undesired operation.

This equipment has been tested and found to comply with the limits for a Class B digital device, pursuant to Part 15 of the FCC Rules. These limits are designed to provide reasonable protection against harmful interference in a residential installation. This equipment generates, uses and can radiate radio frequency energy and, if not installed and used in accordance with the instructions, may cause harmful interference to radio communications. However, there is no guarantee that interference will not occur in a particular installation. If this equipment does cause harmful interference to radio or television reception, which can be determined by turning the equipment off and on, the user is encouraged to try to correct the interference by one of the following measures:

- Reorient or relocate the receiving antenna.
- Increase the separation between the equipment and receiver.
- Connect the equipment into an outlet on a circuit different from that to which the receiver is connected.
- Consult the dealer or an experienced radio/TV technician for help.

**FCC Caution:** Any changes or modifications not expressly approved by the party responsible for compliance could void the user's authority to operate this equipment.

This transmitter must not be co-located or operating in conjunction with any other antenna or transmitter.

#### Radiation Exposure Statement:

This equipment complies with FCC radiation exposure limits set forth for an uncontrolled environment.

This equipment should be installed and operated with minimum distance 20cm between the radiator & your body.

This equipment is not suitable for use in locations where children are likely to be present.

### Industry Canada Statement

This device complies with ISED's licence-exempt RSSs.

Operation is subject to the following two conditions:

This device may not cause harmful interference, and

This device must accept any interference received, including interference that may cause undesired operation.

Under Industry Canada regulations, this radio transmitter may only operate using an antenna of a type and maximum (or lesser) gain approved for the transmitter by Industry Canada.

To reduce potential radio interference to other users, the antenna type and its gain should be chosen so that the equivalent isotropically radiated power (e.i.r.p.) is not more than that necessary for successful communication.

#### RF Exposure Requirements:

This equipment complies with Canada radiation exposure limits set forth for an uncontrolled environment.

This equipment should be installed and operated with minimum distance 20cm between the radiator and your body.

Le présent appareil est conforme aux CNR d'ISED applicables aux appareils radio exempts de licence.

L'exploitation est autorisée aux deux conditions suivantes:

1. le dispositif ne doit pas produire de brouillage préjudiciable, et
2. ce dispositif doit accepter tout brouillage reçu, y compris un brouillage susceptible de provoquer un fonctionnement indésirable.

Conformément à la réglementation d'Industrie Canada, le présent émetteur radio peut fonctionner avec une antenne d'un type et d'un gain maximal (ou inférieur) approuvé pour l'émetteur par Industrie Canada.

Dans le but de réduire les risques de brouillage radio électrique à l'intention des autres utilisateurs, il faut choisir le type d'antenne et son gain de sorte que la puissance isotrope rayonnée équivalente (p.i.r.e.) ne dépasse pas l'intensité nécessaire à l'établissement d'une communication satisfaisante.

#### Déclaration d'exposition aux radiations:

Cet équipement est conforme aux limites d'exposition aux rayonnements du Canada établies pour un environnement non contrôlé.

Cet équipement doit être installé et utilisé avec un minimum de 20 cm de distance entre la source de rayonnement et votre corps.