

1. Activation of the GB 3100

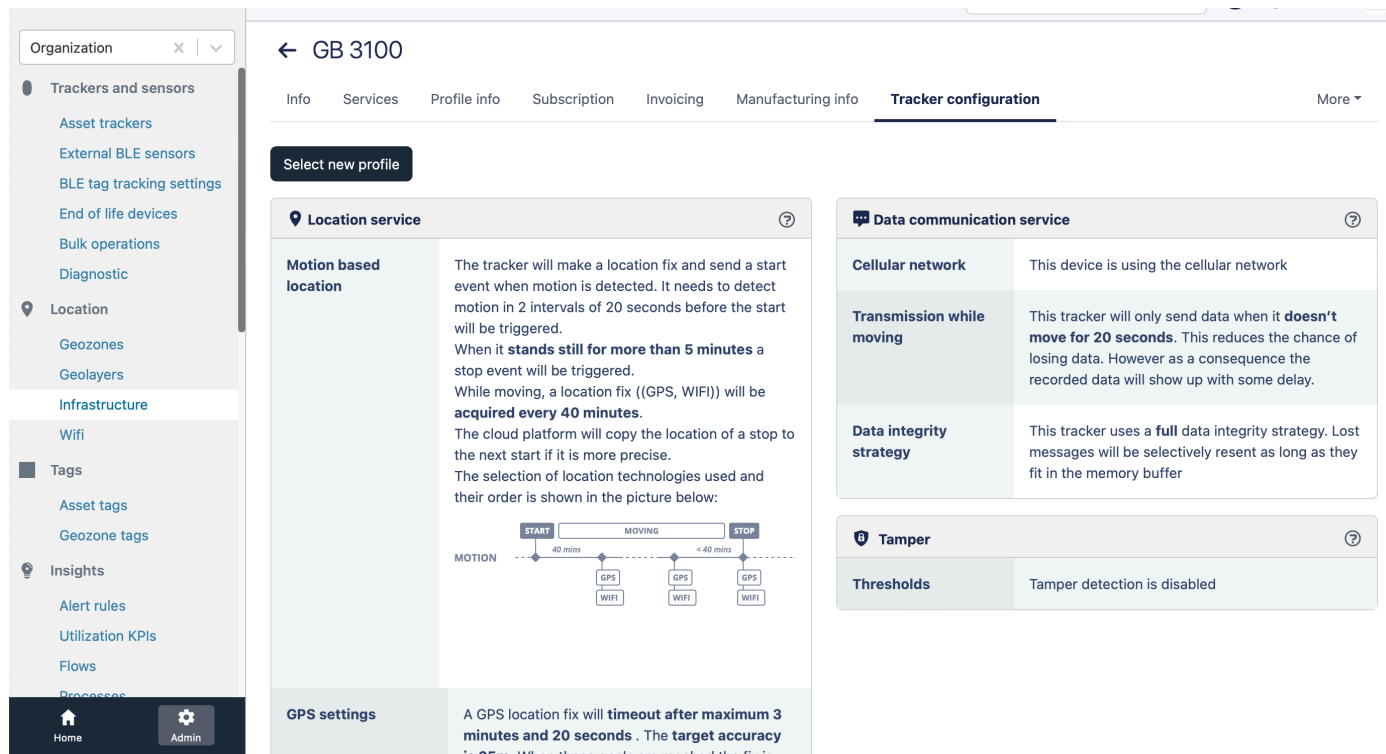


Hold a magnet for about **5 seconds** on top of the logo on the GB 3100 you will see a red LED. Hold the magnet until it is green.

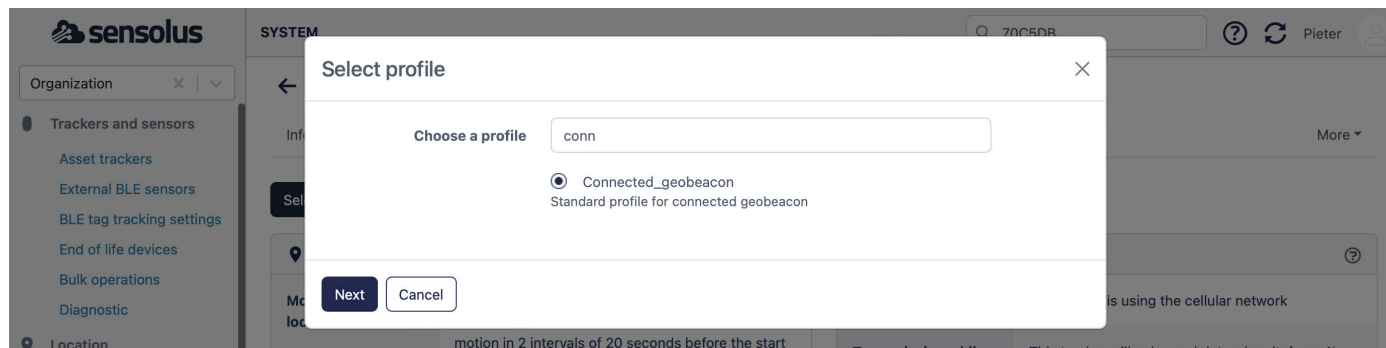
Green LED is **blinking**, the GB 3100 is receiving it's latest configurations.

If the tracker is activated it will check for any pending remote settings.

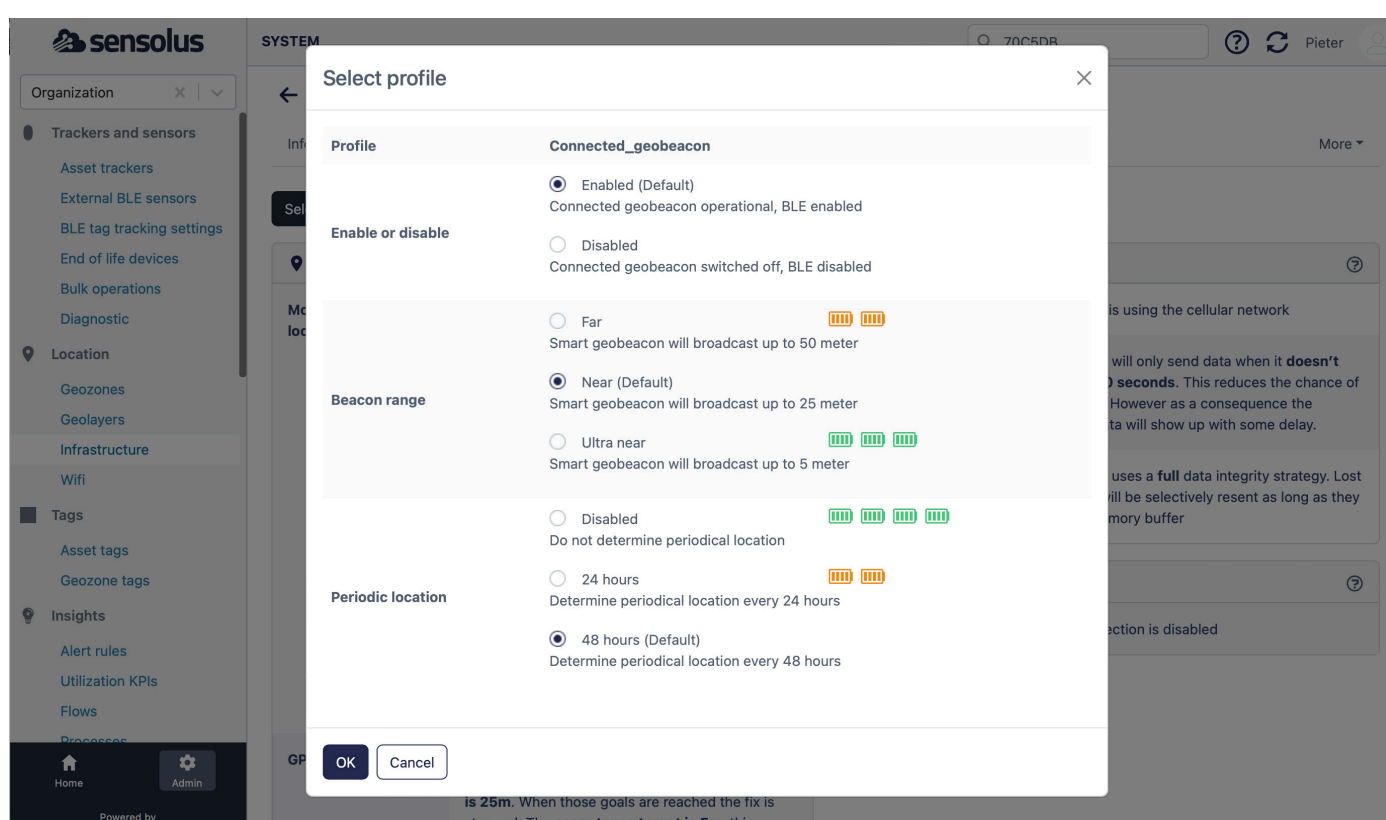
2. Check if the GB 3100 has received the latest configuration.



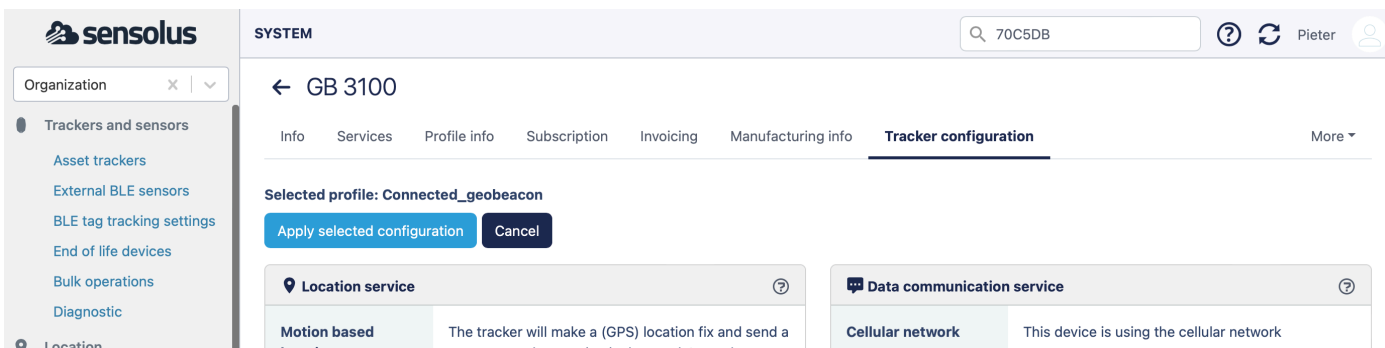
- Go to the admin section of the platform and select infrastructure in locations.
- Select the GB 3100 you want to configure and go to the tracker configuration tab.
- Click on Select new profile



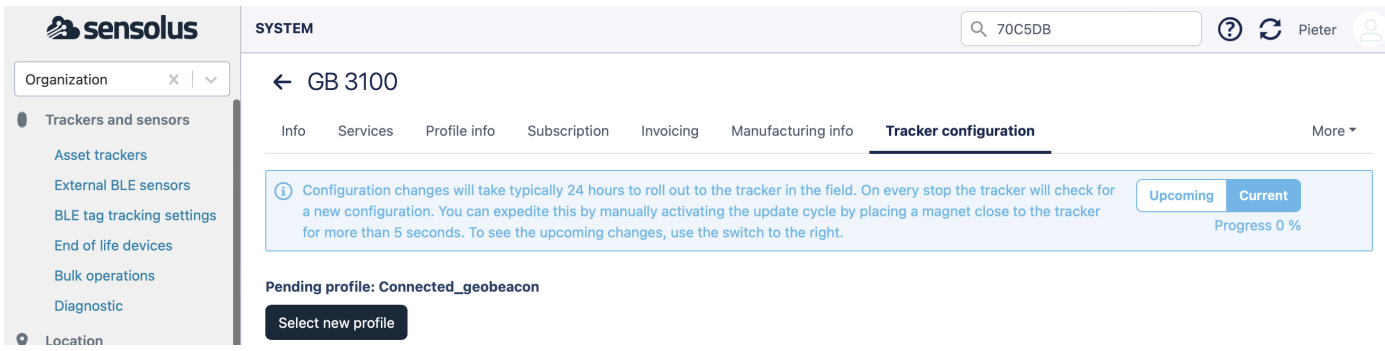
- Search for the profile Connected_geobeacon
- Select the Connected_geobeacon profile
- Click Next.



- Choose the values you want to use for your connected geobeacon.
- Click OK



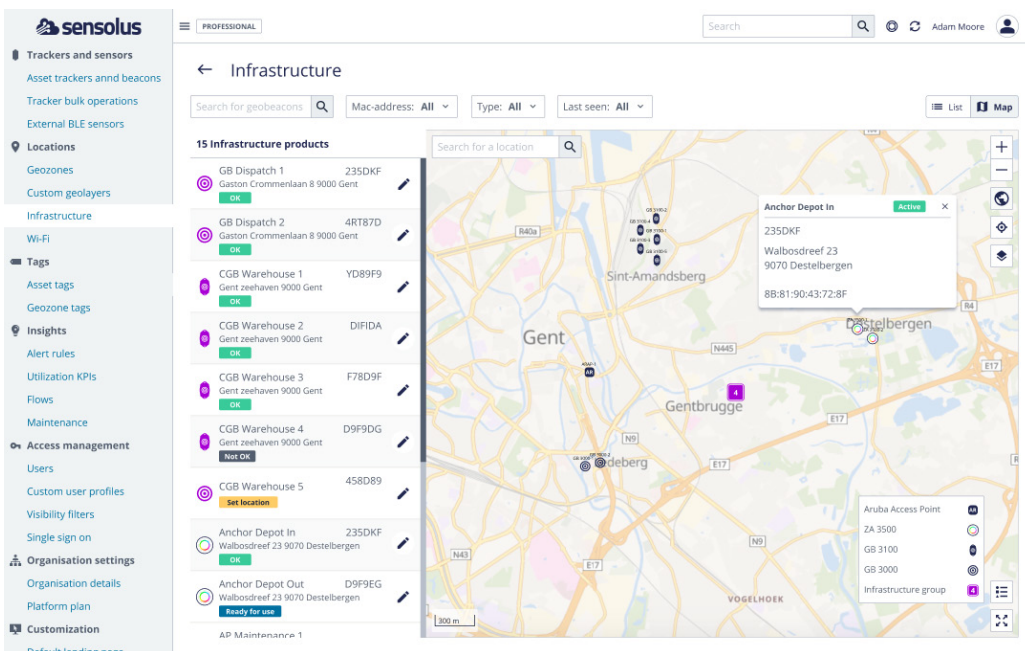
- The profile is now ready to be applied on the tracker.
- Click apply selected configuration



- The profile will be applied within 24 hours.
- You can force the download by holding a magnet next to the tracker for 5 seconds.

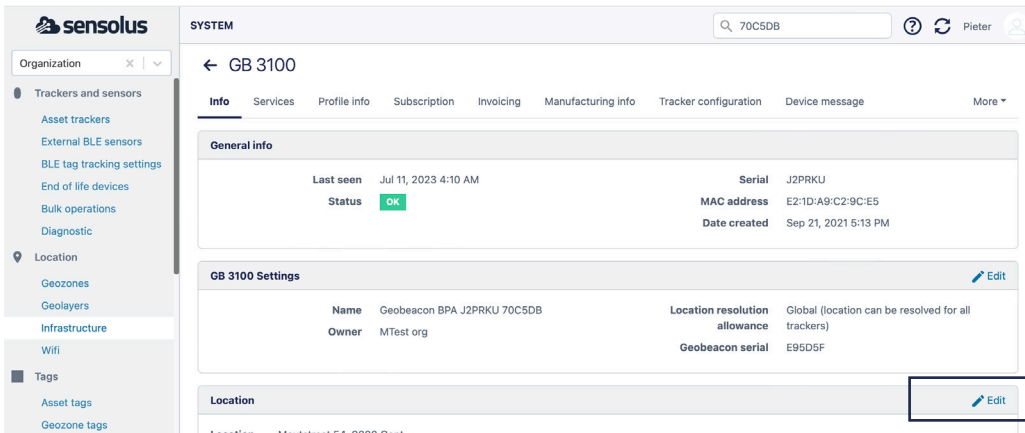
2. Set a location in the platform

Once your GB 3100 is properly activated, you need to add the actual location in the Sensolus platform.



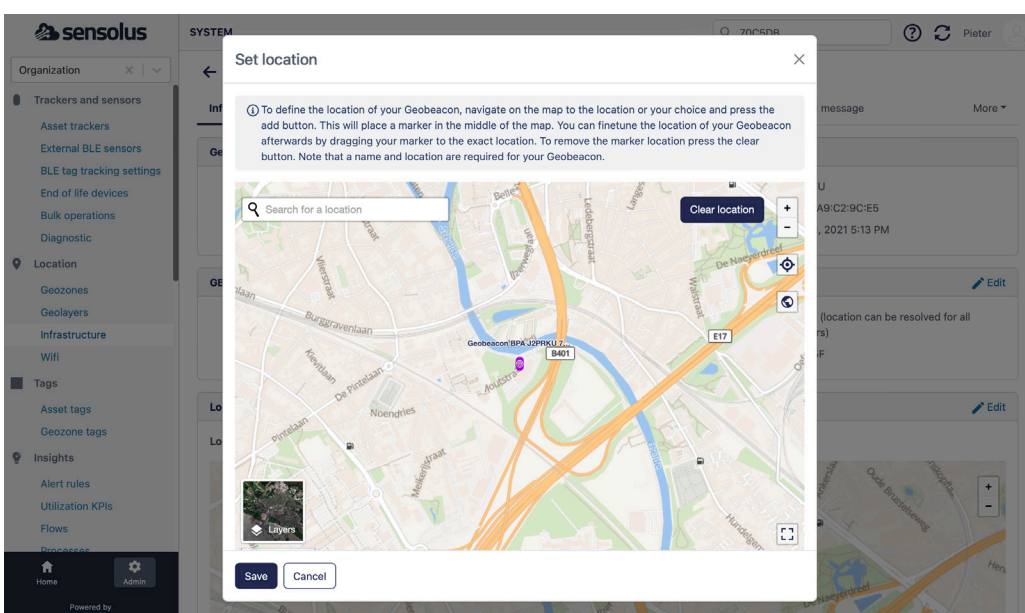
Step 1

1. Sign in to the Sensolus platform and go to the **admin section**.
2. Select **infrastructure**. If your connected geobeacons are listed here.
3. Go to the connected geobeacon you want to set the location for.



Step 2

Go to the Location section of the page and click Edit.



Step 3

Drag the device over the map or enter the address you want to use for the GB 3100.

Click **Clear location** to reset if needed.
Click **Save** to set the location

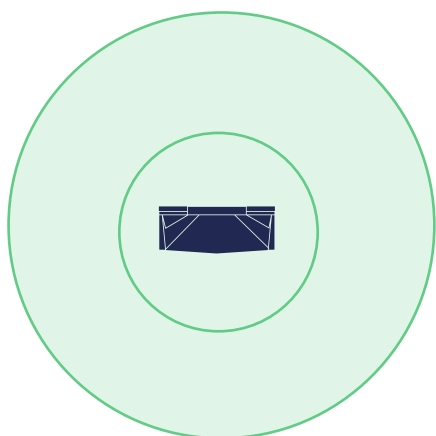
3. Installing the GB 3100

Sensolus Geobeacons use BLE signals.

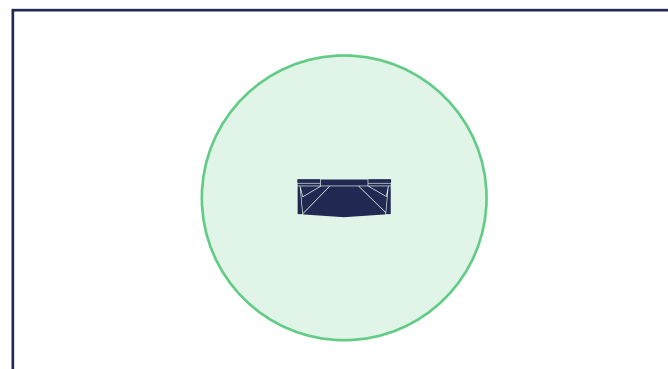
Water and metal surfaces reflect the Bluetooth signals.

Always test the devices in real life circumstances for optimal installation of the geobeacons.

Range of the GB 3100



Depending on the configured signal strength, the Geobeacon will cover an area between 2 meter and 100 meter radius.



For indoor geolocation, the standard range of a GB 3100 is around 30 meters.

Installation advice

Sensolus geobeacons can be installed vertically and horizontally with the back facing the mounting surface.

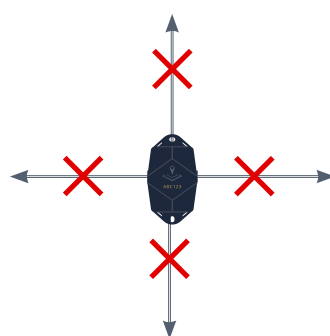
All other installations are not recommended.



1,8 meter

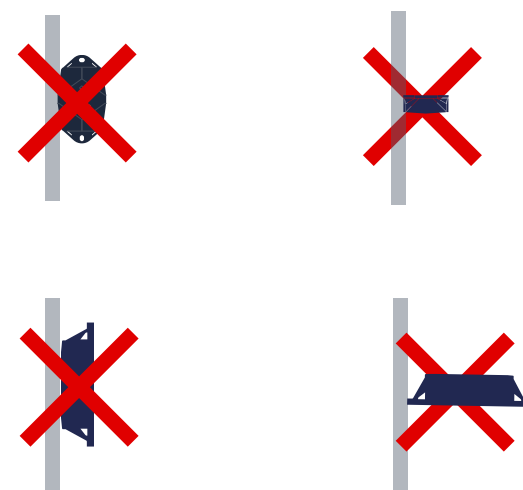
Height

Install the geobeacon as high as possible, minimum 1.8 meter above the ground.



Position

Remember that a GB 3100 is a fixed device that should always remain at the same location.



Wrong orientation

Geobeacons are mounted vertically or horizontally and only with the back facing the mounting surface